

TCXO (Temperature-Compensated Crystal Oscillator)

Surface Mount Type

7W

[2.5×2.0×0.85 mm]

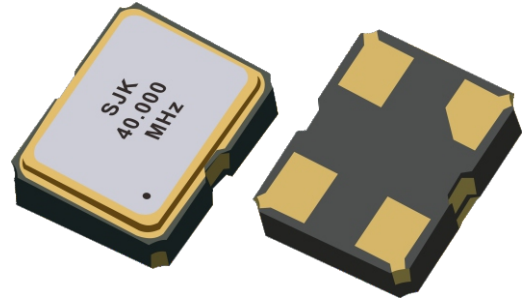
7T

[3.2×2.5×1.00 mm]

TCXO
Output
LVC MOS
Supply Voltage
1.8V~3.3V
Frequency Range
10 MHz~60 MHz

Features

- Ultra smallest size Surface mount package size 2.5×2.0 (2520), 3.2×2.5 (3225), mm×mm
- Temperature Compensated Crystal Oscillators (TCXO)
- LVC MOS output, low voltage operation 1.8V to 3.3V
- Low phase noise
- RoHS Compliant
- Tri-state enable /disable
- Wide frequency range from 10MHz to 60MHz
- Applications: Mobile phone, GPS, Wireless communications, IoT, LTE, WiMAX, Smart grid, Industrial control, and more



Standard Specifications

Item / Type		7W (SMD 2520 TCXO)	7T (SMD 3225 TCXO)
Dimensions		2.5×2.0×0.70 mm	3.2×2.5×1.00 mm
Output mode		LVC MOS	
Output load		15pF	
Output frequency range		10 MHz~60 MHz	10 MHz~60 MHz
Supply voltage		1.8 V ~ 3.3 V	
Frequency stability	Tolerance	±2.0 ppm max.	
	Temperature	±2.5 ppm ~ ±10 ppm max.	
	Supply voltage	±0.1 ppm max. (Vcc±5%)	
	Load coefficient	±0.1 ppm max.	
Operating temperature		-40~+85°C, or specify	
Supply consumption		10 mA max.	
Rise /Fall time		5ms max.	
Voltage Voh (min.) /Vol (max.)		90% Vdd min. /10% Vdd max.	
RMS phase jitter		1ps max.	
Symmetry		45% to 55%	
Start-up time		5.0ms max.	
Storage temperature		-40~+85°C	
Phase noise @ Offset 1kHz		-130dBc/Hz	

TCXO (Temperature-Compensated Crystal Oscillator)

Surface Mount Type

7W

[2.5×2.0×0.85 mm]

7T

[3.2×2.5×1.00 mm]

TCXO

Output

LVC MOS

Supply Voltage

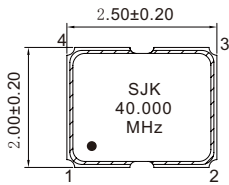
1.8V~3.3V

Frequency Range

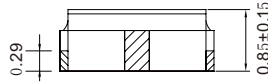
10 MHz~60 MHz

Outline Dimensions (Unit: mm)

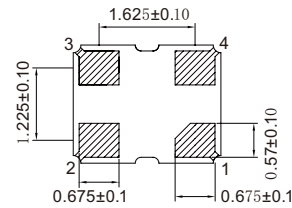
7W (SMD 2520 TCXO)



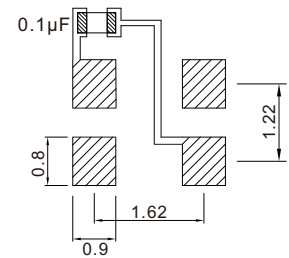
Top View



Side View

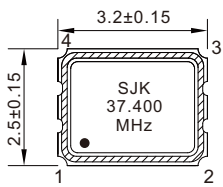


Bottom View

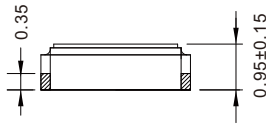


Top View Suggested Layout

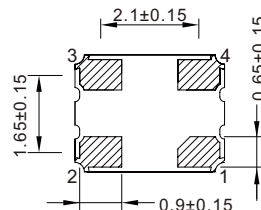
7T (SMD 3225 TCXO)



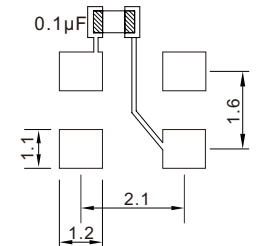
Top View



Side View



Bottom View



Top View Suggested Layout

Pin Map

Pin	Connection	Function
1	Tri-state / GND	GND / Tri-state function
2	GND	Vcc power supply ground
3	Output	Oscillator output
4	Vcc	Power supply voltage